

VERTICAL DOORS, INC.

VerticalDoors.com

542 3Rd Street, Lake Elsinore, CA 92530

TEL: 951-245-8669, FAX: 951-245-5481



BMW 3 2007-2013 2DR E92

U.S. PATENTS

#6,808,223; #6,845,547; #7,140,075; #7,059,655

PATENTS AGGRESSIVELY ENFORCED!

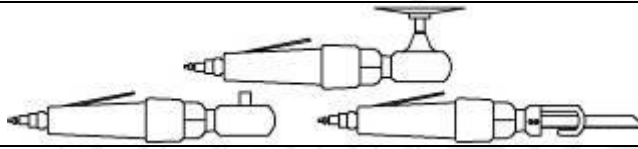
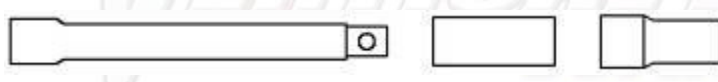
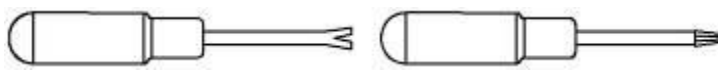


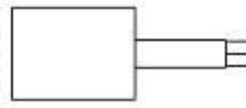

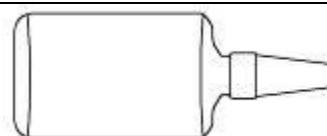
**PLEASE CAREFULLY READ ALL INSTRUCTIONS BEFORE
ATTEMPTING TO INSTALL THIS PRODUCT.**

**FOR QUESTIONS PLEASE
CONTACT US AT (951) 245-8669**

THIS KIT INCLUDES:

| | |
|--|---------------------------------|
| ➤ 4 M10-1.25X30MM BOLTS WITH WASHERS | ➤ 2 SHOULDER BOLTS WITH WASHERS |
| ➤ 2 F.H.C.S M8-1.25X30MM BOLTS WITH LOCKING NUTS | ➤ RIGHT AND LEFT HINGE ASSEMBLY |
| ➤ 4 M8-1.25X30MM BOLTS WITH WASHERS | ➤ 2 SHOCKS 740 PSI |
| ➤ 2 PINS | ➤ 4 DOOR BRACKETS |

TOOLS REQUIRED FOR INSTALLATION:

| | |
|---|--|
|  | AIR RACHET, GRINDER AND CUTTER. |
|  | 7MM, 8MM, 10MM, 11MM, 13MM, SOCKETS AND EXTENSION. |
|  | FORK AND PHILLIP'S SCREW DRIVERS |
|  | SPACERS FOR THE DOOR GAP. |
|  | 3/16 ALLEN WRENCH |
|  | 1/4 and T30 TORX BIT |
|  | 9/16 WRENCH, PUNCH, G-Drill (.261), 8MM TAP |
|  | LOCTITE RED |

(Note: The pictures on the manual are for reference only they may not match your vehicle.)

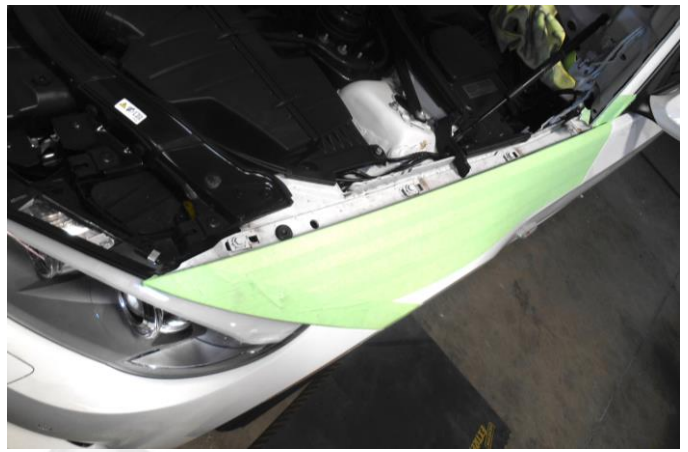
“Installers with experience recommended”

Disconnect the battery.
Loosen door catch. And set it at the close position. Let it fall inside the door. We'll remove the door catch after removing the door panel.



Remove Fender:

Tip: We cover the edges of the fenders and doors with painters tape to avoid any scratches to the paint.



You will need to remove the side skirt. To remove the side skirts 1st remove the kick plate as shown.



Remove all the fasteners around the wheel well

After removing the fasteners around the wheel well, you will be able to pull on it and remove one bolt securing the fender to the bumper.



After removing all the fasteners

pull on the splash guard, inside the fender on the right corner is a bolt holding the fender.



Remove (1) bolt located at the bottom of the windshield pillar.

Remove all bolts and/or screws located on the top of the fender. Including the bolt located under the plastic cover.

After removing the kick plates, you will be able to carefully remove the side skirt, this will give you access to the 2 bolts holding the fender at the bottom.

Your will have to remove the side markers before removing the fender.



On the passenger side you will have to remove the windshield water reservoir.



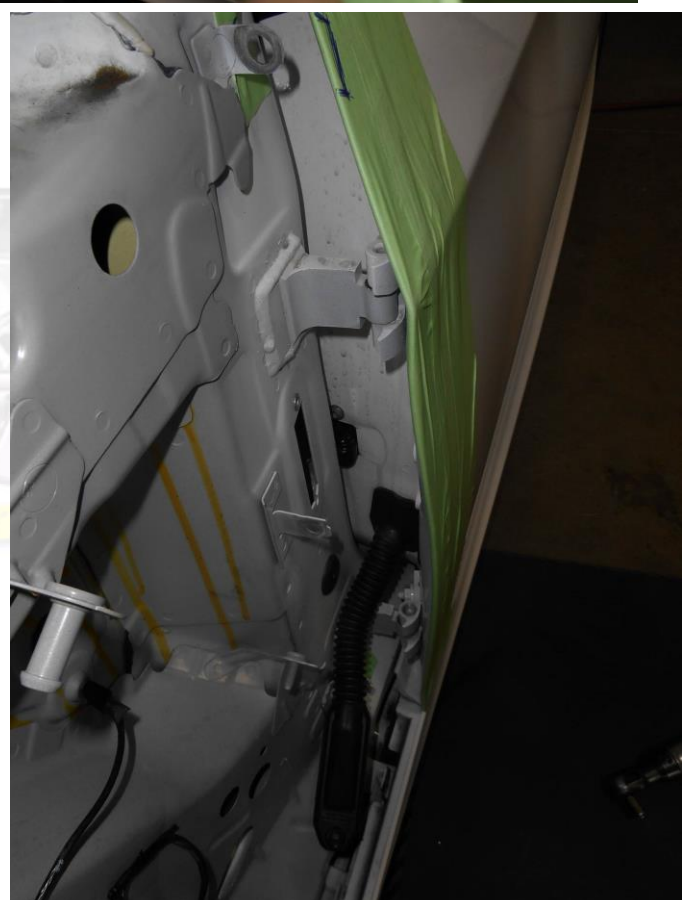
****MARK THE FACTORY LOCATION OF YOUR DOOR**

After removing the fender use 2" painters tape on the body and the door to mark the factory location. Measure and mark the distance from the edge of the door to the apron by the top and bottom hinge.



Modify the apron and door:
Open the door and remove the factory wire harness from the apron.

Remove the bolts from the factory hinge. You will need to have your helper place a stool or something to hold the door.



Remove the door and cover the area around the factory hinges to protect the paint and the interior of the car. Use a power grinder to grind the top and bottom hinge as shown.



Use painters' tape on the apron around the top and bottom hinge as shown on the right to protect the paint. You will need to grind down the top and bottom hinge post as shown below



After grinding down the two-door hinge post place the new VDI hinge system against the two flat sections and mark the center of the holes. Try to get the holes as close to the center factory hinge post as possible. You will need to drill and tap one hole on at the



top and one hole at the bottom as shown.

Remove the door panel and peel back the door cover this will allow you to remove the door catch and modify the door wiring to gain extra wire slack.

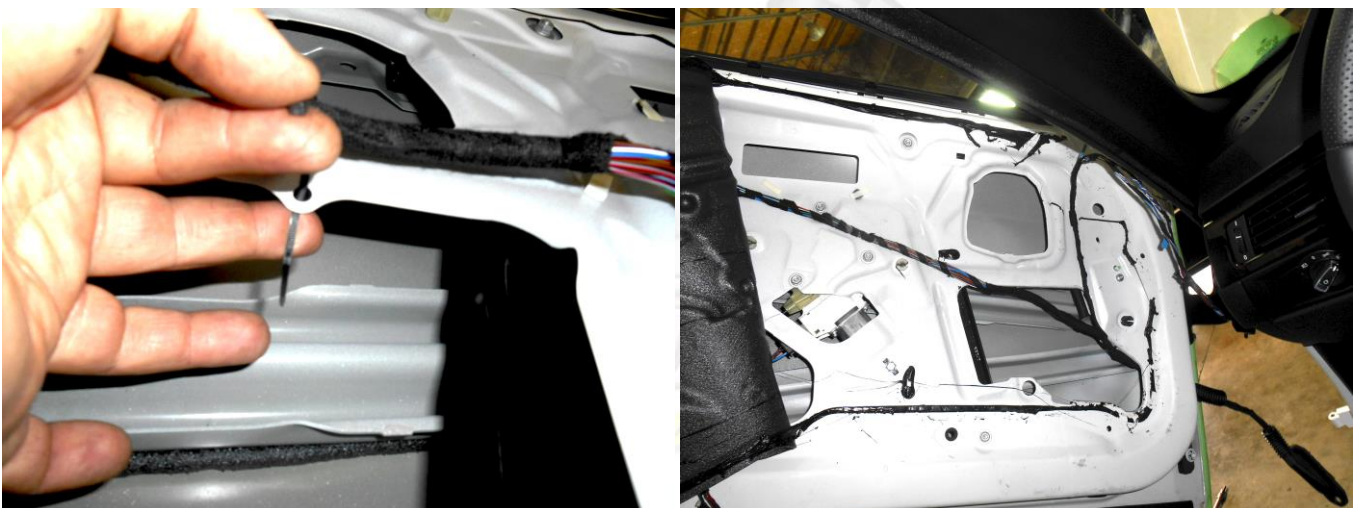


Remove all the wire clips from the front of the door to gain the extra wire slack needed. You will have to cut and extend 2 cables for one of the door sensors as shown below.

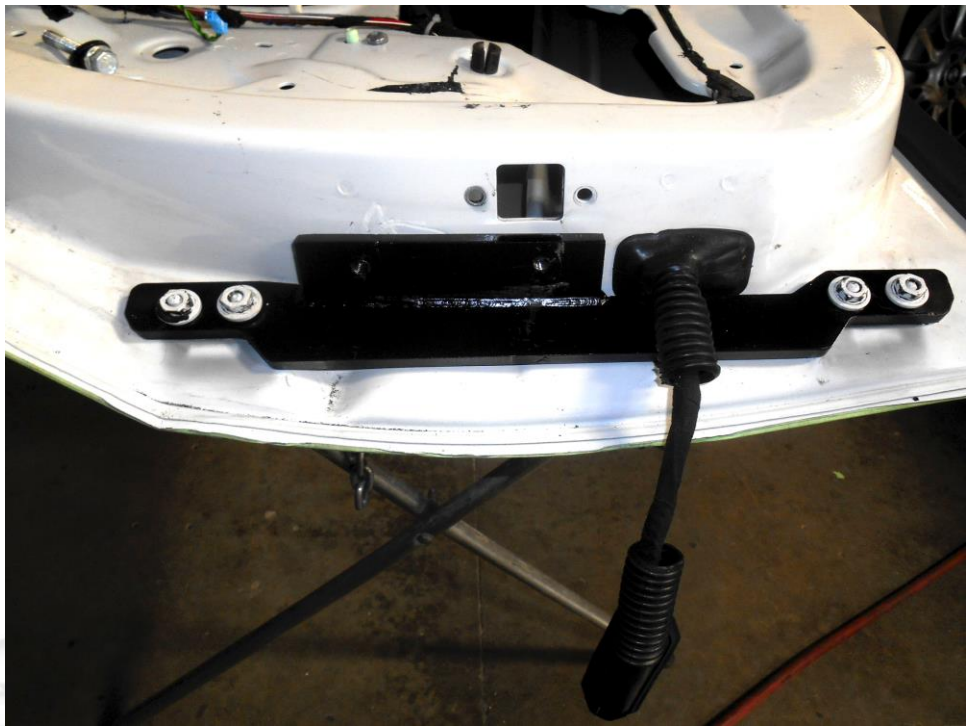


VerticalDoors.com

Make the wires to on a straight line and used "Zip ties" to secure the wires to the frame of the door.



Now that you have gain the extra wire slack, cut the factory wire boot in half and pull the extra wire slack out as shown on the right. Install the new VDI door bracket as show. Use the factory nuts.



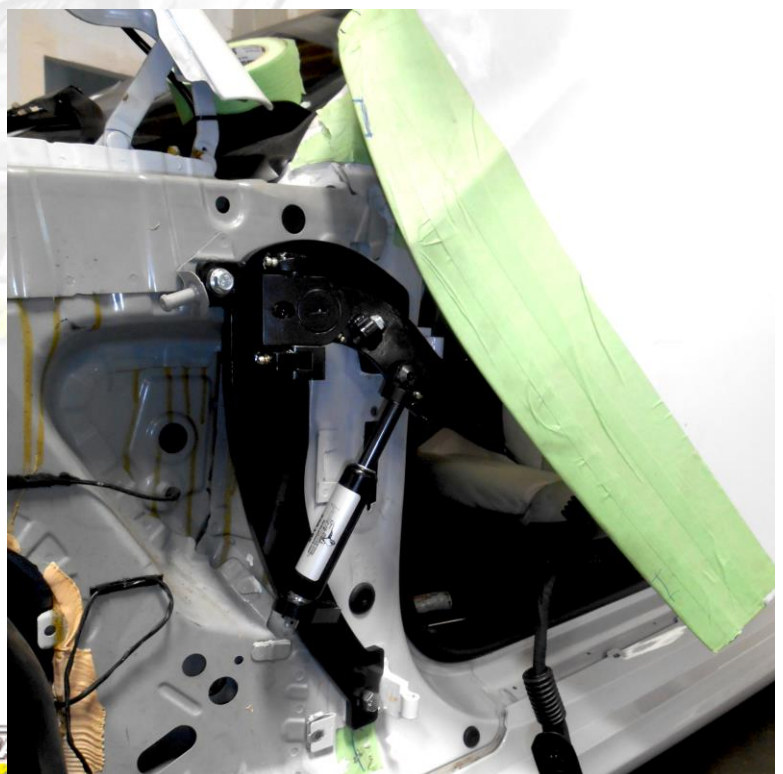
One the bracket is securely installed on the door now you can install the second section of the now VDI hinge system.

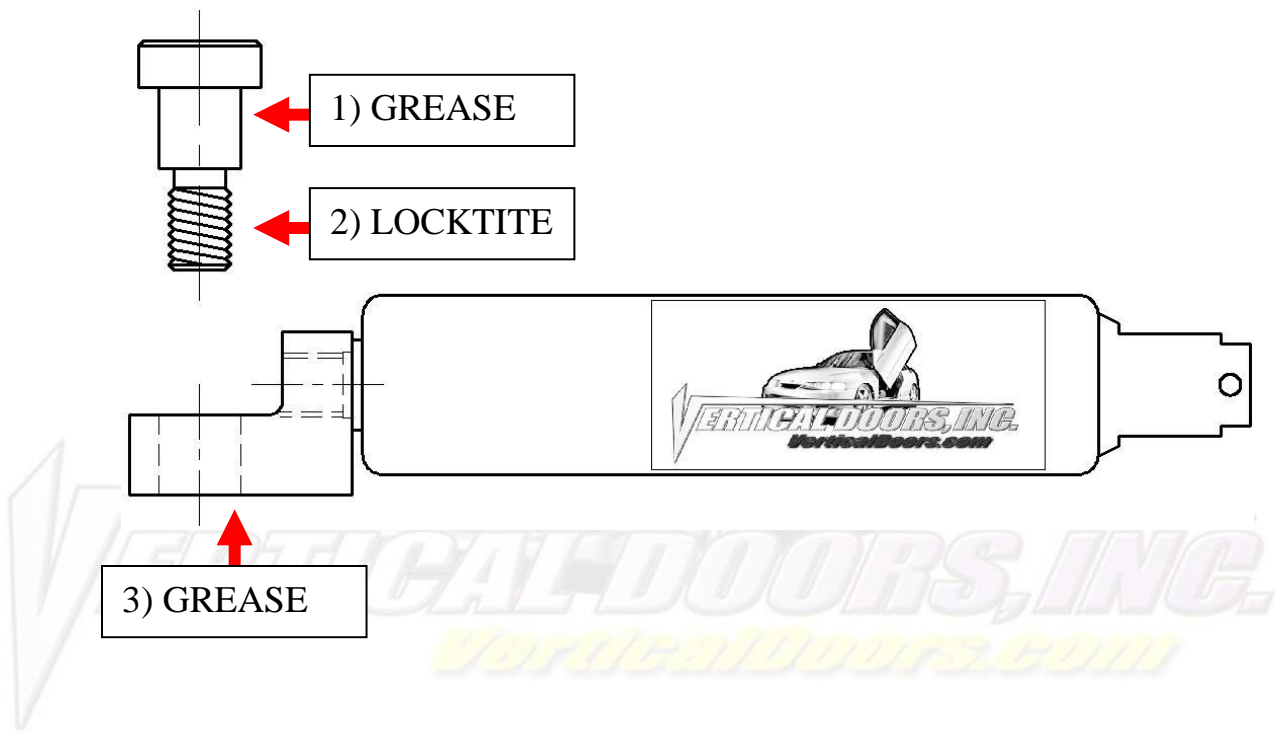


Once the two pieces of the hinge and securely connected you can install the new VDI hinge on the car. Make sure to use a helper. Make sure that all the factory marks are on the correct position and the distance from the apron and the edge of the doors is the correct one.



Asked your helper to raise the door and installed the shock as shown on the image on the right.





***IMPORTANT STEP: DO NOT SKIP THIS STEP. THIS STEP IS CRUCIAL IN YOUR INSTALLATION PROCESS, IF THIS STEP IS NOT COMPLETED WHEN INSTALLING THE VERTICAL DOOR KIT; ALL WARRANTIES ARE VOIDED, AND MAY CAUSE FUTURE PROBLEMS WITH YOUR VERTICAL DOOR SYSTEM.**

1ST, make sure you put grease on the body of shoulder bolt where the arrow is pointing.

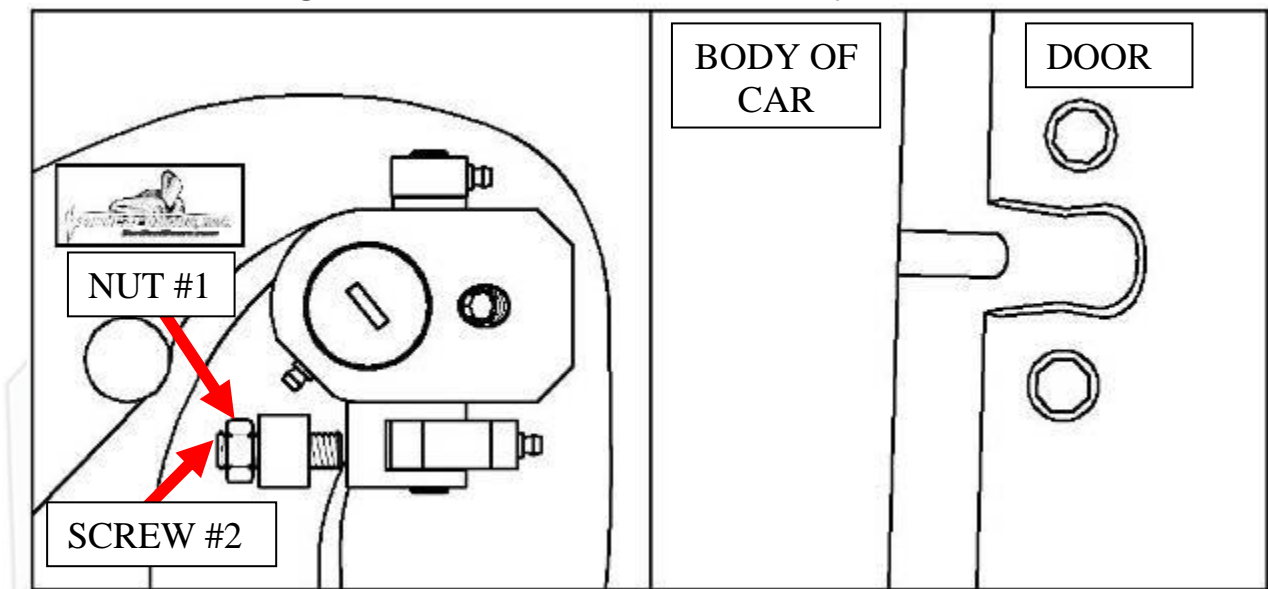
2ND, make sure you put red Loctite, where the arrow is pointing, on thread of shoulder bolt.

3RD, make sure you put grease on the bottom side of the shock end.



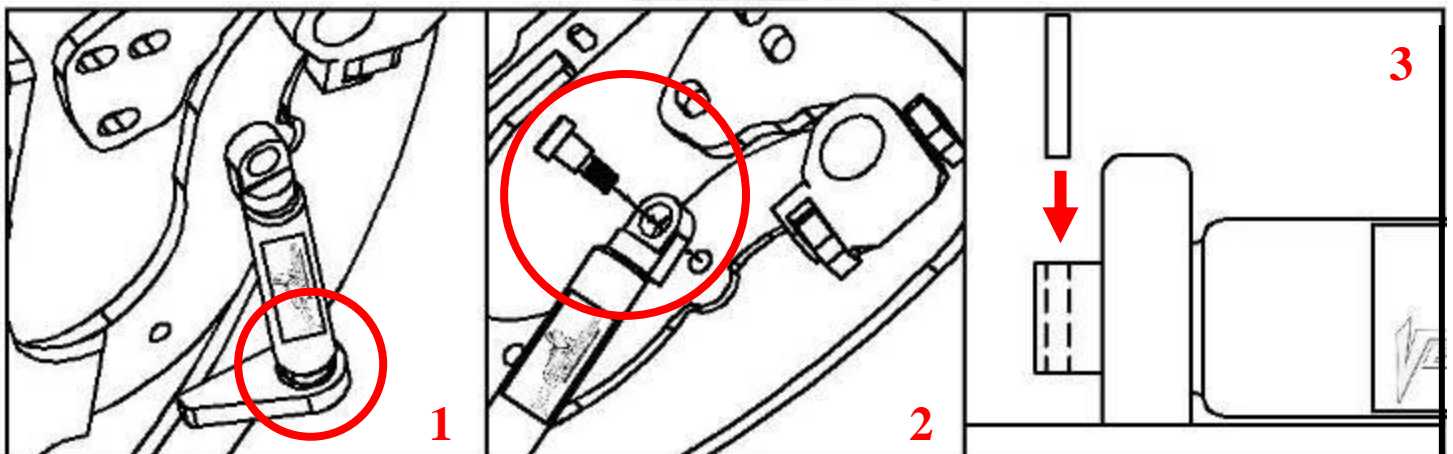
WARNING! THE USE OF ANY TYPE PLYERS, PAINT OR FOREIGN MATERIALS ON THE SHOCK'S BODY OR SHAFT WILL VOID THE WARRANTY.

Once hinge is locked in place, break nut #1 then turn Allen set screw #2 on fig until it hits the block then open the door and continue to adjust until the door matches with the striker, open and close door making sure it closes like factory.



Hint(leave #1 nut loose until shock is installed Allen set screw will have to be re-adjusted after shock is installed.*

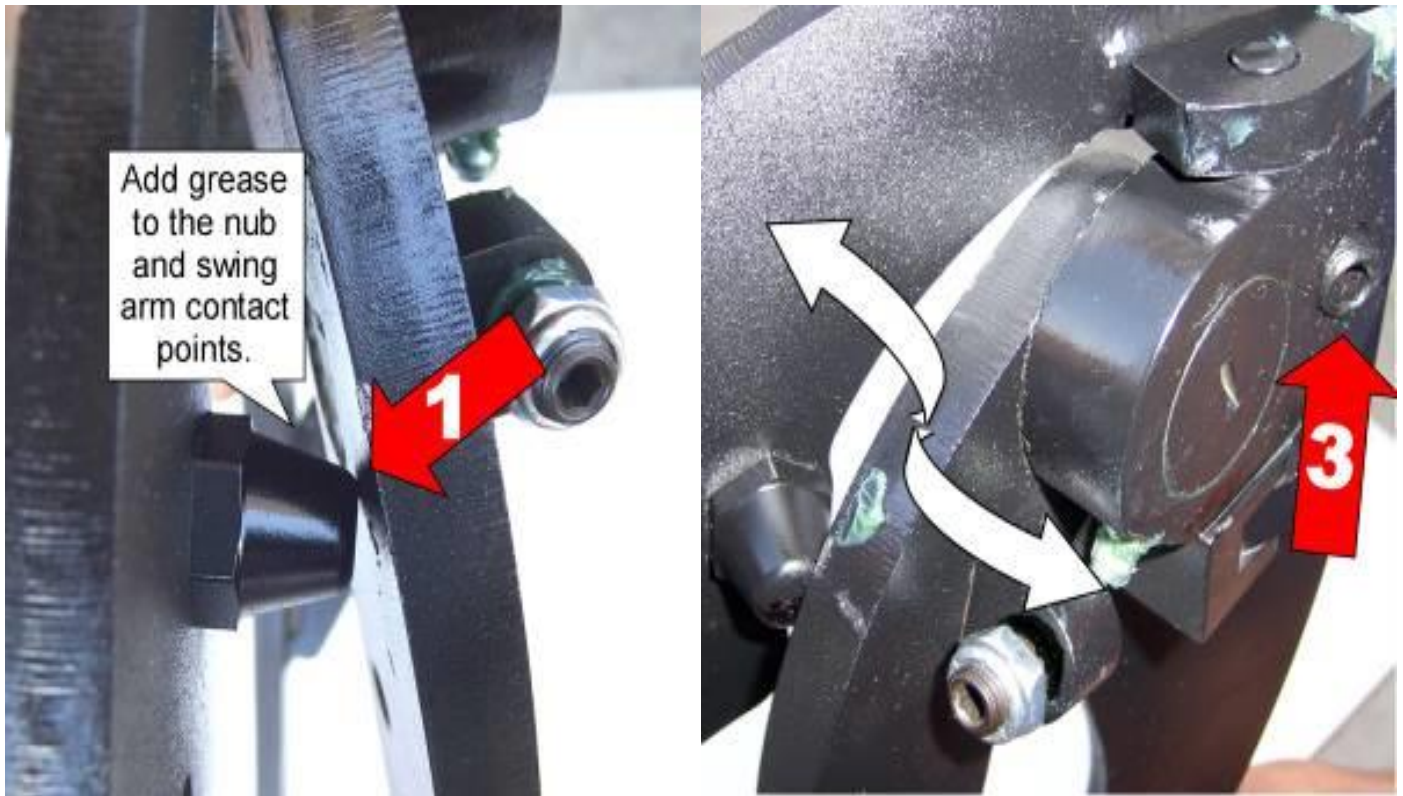
Install the shock.



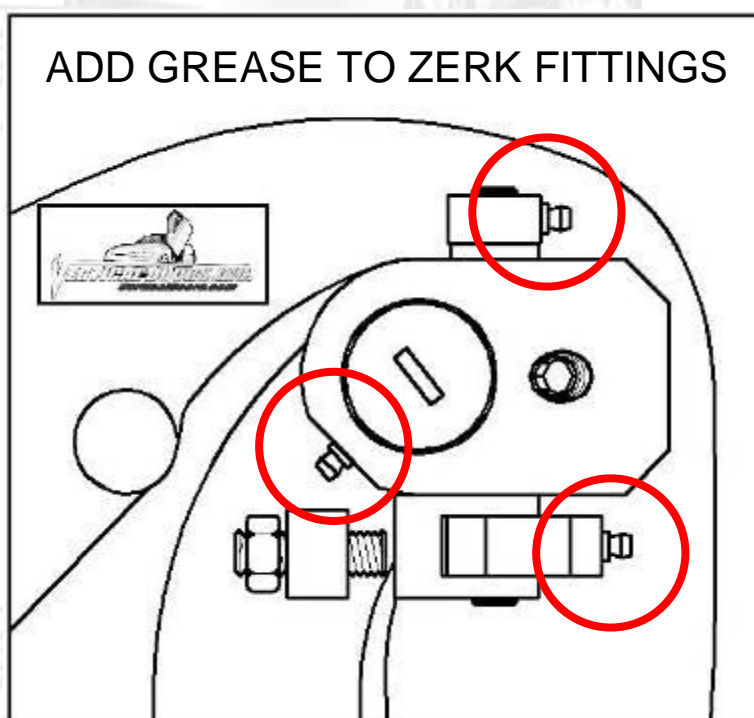
Hint (You will need a helper to raise the door). (Slip the spherical rod mount into the spherical ball bearing (1). Using a 1/4 Allen wrench, tighten the screw into the swing arm (2). After the shock is installed secure it by installing the pin in the bottom shock end (3).*

VERTICAL DOORS, INC.
VerticalDoors.com

After shock is installed re-install door panel and lift the door. Adjust door opening screw #3 clockwise until distance between nub and swing arm is enough so that the swing arm moves up and down freely.

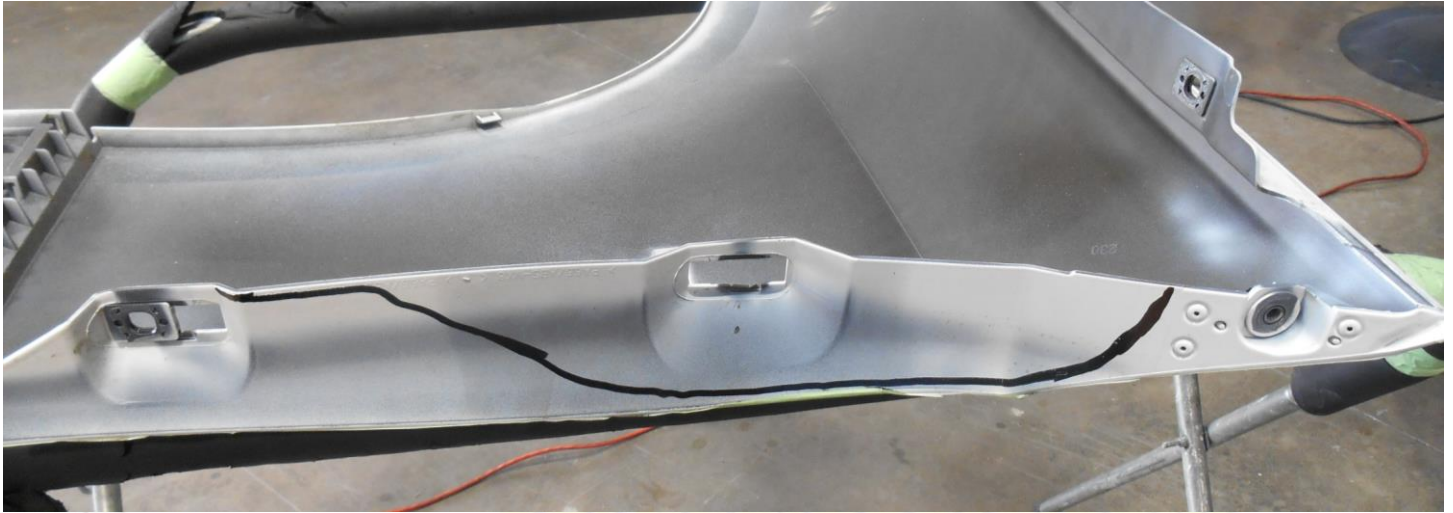


Hint (Fine tune the Allen set screw (#2) to realigned striker with door. After the door is aligned, test door by opening and closing, lifting and lowering door several times.*



Note: Do not install fender until the adjustment of the door is accurate, and the set screw is tightly secure. Also make sure everything is tight, adjustment is set and everything is Locktite.

You will have to cut the fender to make room for the new Vertical Doors Inc. system, use a power cutter to cut the fender.
Note: After you have cut the fender use a sander or grinder and make sure the surface is completely flat. To give it a finished look and protect against rust use touch up paint on the cut.



Replace the fender.

**Thank you for your purchase of the
BMW 3 Coupe 2002-2013
*VERTICAL DOORS INC. SYSTEM***

Simply Uplifting



NOTE:

Vertical Doors Inc. assumes no responsibility for any damages caused by improper installation